

BOEN gradings

Visit our virtual product finder to get a better impression of the gradings.

boen.com/products

Wood is a natural product. Some types of wood – beech, for example – have a relatively calm grain. Others, like oak, are rich in structure, with a spectrum of calm to rustic. We offer a wide selection for you to choose from.



CALM

Consistent growth; only small knots; standing or lying year rings.



LIVELY

Natural grading with small to medium knots; a limited spectrum of colours due to sapwood.



RUSTIC

Structure and vivid growth; larger knots; sapwood and heartwood; a rich spectrum of colours.

| | CALM | LIVELY | RUSTIC |
|--|------------|------------|------------|
| <i>Select</i> | ██████████ | | |
| <i>Adagio, Andante, Nature</i> | ██████████ | ██████████ | |
| <i>Finale, Concerto, Contract, Basic</i> | | ██████████ | |
| <i>Animoso, Bellevue, Country, Vivace, Rustic, Traditional</i> | | ██████████ | ██████████ |
| <i>Marcato, Baltic</i> | | | ██████████ |
| <i>Vivo, Canyon</i> | | | ██████████ |
| <i>Espressivo</i> | | | ██████████ |

Planks, Finesse and Maxi are graded according to EN13489, free class (Boen class).
Longstrip, Prestige and Traffic are graded according to ○, △ and □ after EN13489.

Wood is a product of nature – each tree has its own structure and individual colour combination. An image or a sample will therefore never be able to give you a complete picture of the finished floor. Please also note that the colour may change when exposed to light. As a guideline, darker wood species will get a more golden tone, whereas lighter species will become slightly darker. Cracked knots are filled with putty, so small gaps between the putty and wood may appear.

Animoso

Grading explanation



Knots, permitted:

- ▶ Cracked knots up to 5cm (diam.)
- ▶ Solid (healthy) knots up to 5cm (diam.)
- ▶ Knots (filled) up to 3cm (diam.)
- ▶ Knots on the edge
- ▶ Continuous splits or ingrowing bark, max. 15cm in length, max. 5mm in width (2 per board)
- ▶ Smaller splits, max 3cm length
- ▶ Solid pith



Sapwood/ Color variations permitted:

- ▶ No sapwood allowed *



Color differences permitted:

- ▶ Middle variations in color
- ▶ Occasional light watermarks
- ▶ Dark ends

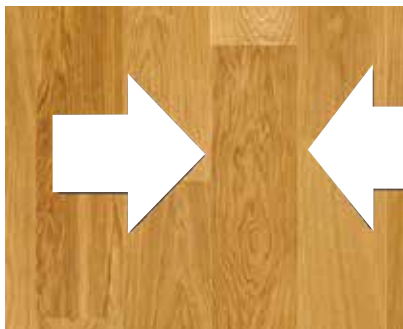
Wood structure permitted:

- ▶ Mirror / pith grain
- ▶ Quartersawn and riftsawn board texture
- ▶ Occasional insect holes (max. 3/board)

*The Animoso grading can naturally contain sapwood and discolouration, which may be reduced by the pigmentation colour within the surface finish. Following colors are using this grading: Oak Grey Pepper, Grey Harmony, Horizon, India Grey, Brazilian Brown, Soft Brown, Medium Grey, Fresh White, Oak Semi Smoked, Oak Semi Smoked white.

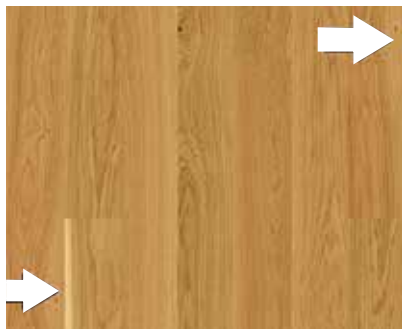
General

Oak characteristics



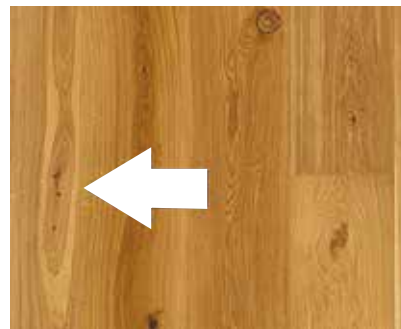
Key Characteristics:

- ▶ Quartersawn and riftsawn board texture



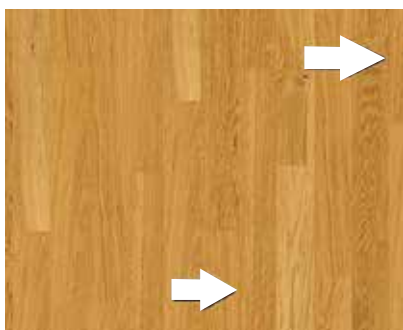
Key Characteristics:

- ▶ Sapwood



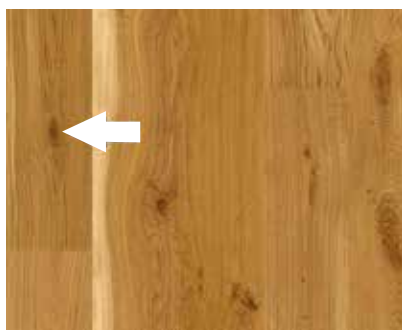
Key Characteristics:

- ▶ Moon rings



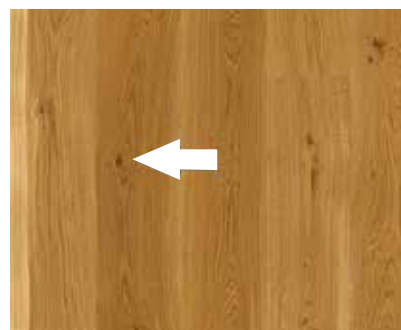
Key Characteristics:

- ▶ Mirrors



Key Characteristics:

- ▶ Knots, sound and intergrown



Key Characteristics:

- ▶ Splay knots and dead (not intergrown) knots



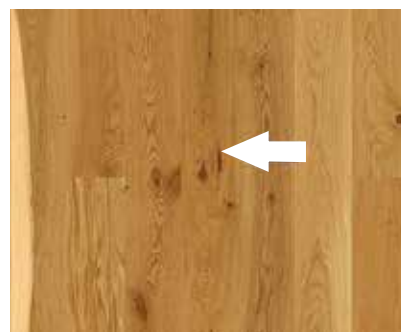
Key Characteristics:

- ▶ Cracked knots



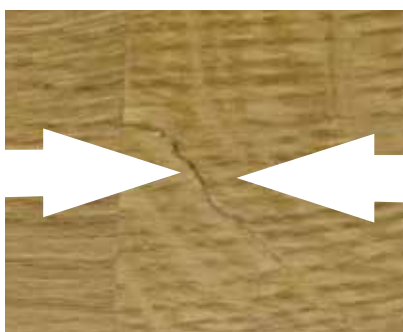
Key Characteristics:

- ▶ Cat spots



Key Characteristics:

- ▶ Ingrowing bark



Key Characteristics:

- ▶ Lightning shake